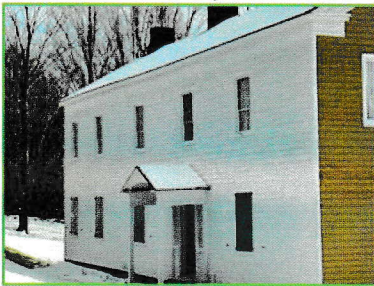


Board of Trustees

President . Mary Davis
 V President . Judith Mihal
 Secretary . Ron Burch
 Treasurer . Sandy Lane
 Trustees:
 Joan Draus
 David Devendorf
 John Case
 Walt Lane

7355 State Rt. 5, St. Johnsville, NY



Come visit the
1747 Nellis Tavern
 on Sunday afternoon
 this summer. We may
 open every Sunday,
 June—September,
 1:00-4:00 P.M. \$5.00

Inside this issue:	
Work on the Tavern	1
"Cheese House"	2
Garden Life	2
School #8 Update	3
Membership App	4
Thank You	5
Future Events	5
Mercantile Members	5
Antique Show	6

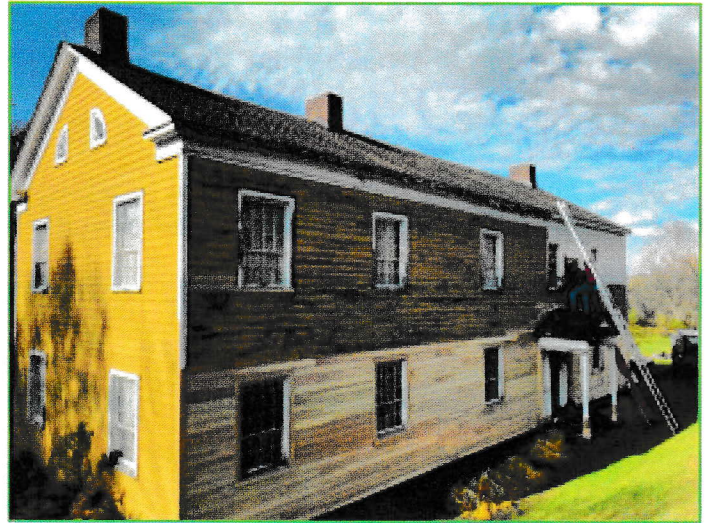
Newsletter

More Work on the Tavern and Grounds

by Walt Lane

The plan is to refurbish the entire outside of our 1747 Nellis Tavern now that much of the interior work has been completed. After all, the building, or at least a good part of it, will be 275 years old in 2022.

So we enlisted the talents of the Elwood Construction Company, LLC from right here in St. Johnsville. The task is to replace portions of the exterior walls where the clapboards have weathered and decayed. Tom and Peter, starting on the north face of the building, did that and more, replacing windowsills, cleaning out materials between the boards and the wattle and daub interior. This will make the building more breathable to prevent damage from condensation and humidity. The small entry porch was repaired and looks great.



Elwood C. C. finished their 2020 project by staining the entire north side, facing Route 5. Painting it yellow will be first on the list in 2021. We will also install gutters across the roof line. The second phase will be tackling the east end with renovating or replacing more windowsills, clapboards and structural pieces.

Other work on the property this summer included rebuilding the stone wall surrounding the herb garden next to the west end of the Tavern. Sandy persuaded Walt to help with clearing the weeds from that garden and repositioning several plants. It will need more work next summer. The frame building containing our porta-potty was



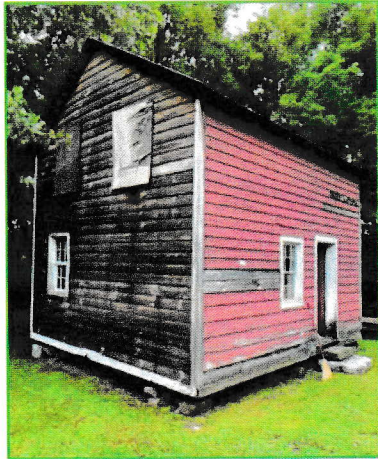
Painted red to match both the south side of the Tavern and the "cheese house" building. The cheese house was emptied, refurbished on the exterior, had windows repaired and a new door added, and was then painted red. Plans for that building are ongoing.

We, the trustees, are so looking forward to the time, perhaps next Fall, when we can again show off our treasure.

The “Cheese House:” Was It Once on the Erie Canal? Research Continues

by Ron Burch

Despite visitation restrictions caused by the Pandemic of 2020, which affected historic sites, museums, and venues across the nation, including Nellis Tavern, the Palatine Settlement Society was able to conduct much-needed repair and restoration projects which enhanced the Tavern, the New Turnpike Road Schoolhouse and the small historic structure on the Nellis Tavern property, known to many people as “the cheese house.”

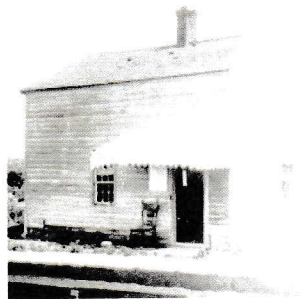


The “cheese house” was donated to the Society in the 1980s by Christine O. Egelston, whose family farm was the historic Sponable property on Airport Road south of the Mohawk River across from Palatine Church. The structure was carefully trucked across the river to Nellis Tavern, having been used for decades on the old Sponable farm as its – you guessed it – cheese house, but also

schoolhouse and later hired man’s residence.

In its “folk” simplicity, the building’s form and size could date it anywhere from the 18th century to well into the 19th century. Its structural components, however, and the few original details remaining in the interior, including hardware and cut nails, point to construction sometime early in the 19th century prior to the Civil War. With its corner cupboard and enclosed corner stairway, the building “reads” like it was possibly intended for domestic use.

Several years ago, Craig Williams, a retired curator at the NYS Museum in Albany, sent PSS board member Ron Burch a copy of an historic photo of a lock-tender’s house on the Black River Canal between Carthage and Rome, NY, north of the Mohawk Valley. The



Black River Canal, designed to be a feeder canal for the Erie Canal, was constructed between 1838 and 1848, coinciding with the enlargement of the Erie Canal through Montgomery County. The Black River Canal structure bears a striking resemblance to the “cheese house” at Nellis Tavern, which raises a question: could the Nellis Tavern “cheese house” possibly have been a lock-tender’s house, perhaps originally at the Erie Canal lock across from St. Johnsville, then carted to the Sponable property when no longer needed at its original site? In the 19th and early 20th centuries, buildings were jacked up and moved more frequently than many of us might realize.

The other red building



Pear blossoms



New walls and steps



Research continues and hopefully will increase as access restrictions are lifted at research venues. At this point the two structures’ similarities remain intriguing.

School #8 Update

by John Case



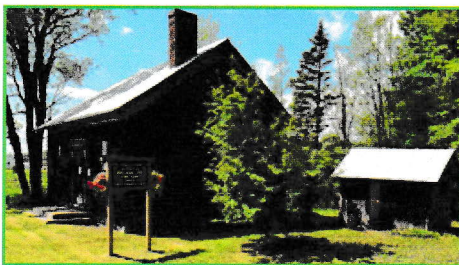
I am updating the New Turnpike School Restoration Report and explaining why I am interested in the project.

A native of Troy, Pennsylvania, I grew up on a farm and after serving in the Army and graduating from Cornell, married Patricia Woodward in 1961. We worked the PA farm for ten years then came to NY state. I worked for the Agway Building Department and Pat taught school in Canajoharie. When we came here, we wanted to find a rural property to raise our three children. We found an old Nellis farm owned by the Settle family. Willis Barshied had said our home on the New Turnpike was built in the late 1790's by the Nellis family. In February 2021 we will have been fifty years on this farm. After a short time, we bought the feed mill on North Division street in St. Johnsville. We ran it until 1991, then I went to work for the USDA.

I had extra time and with the encouragement of Willis Barshied we joined Fort Klock. I served as Chairman of the Board. After some time, when the Reenactors became active at the Fort, we became less involved. At the time I became more interested in the Nellis family history than the Klock history, so we joined the Palatine Settlement Society.

Since the school can be seen out our kitchen window, I could see it falling into disrepair. I at least wanted to stabilize it, so I became involved in the restoration. Living so close to the school it is easy to become prominent in the restoration.

As of this Fall the exterior of the school has been almost completely restored and the school yard has been reclaimed to where it was in 1945 when it closed. The



windows have been completely re-glazed, the fascia and soffit restored, and exterior painting completed. The entrance porch has been rebuilt.

A historic sign has been added and the flagpole replaced. The school yard has been cleared to its original boundaries. The lilac tree is a bush again and the maples along Edwards Road have grown a lot!

We have welcomed the input of former students. Janet Settle Shuster remembers the location of exterior items such as the swing and slide, and most important the outhouse. She also described the layout of the classroom.

Although I have been involved, the work could not have progressed without the complete support of the PSS. They have provided the fundraising to make the project possible and the guidance to keep the restoration correct.

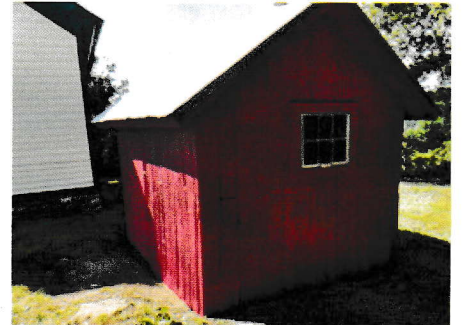


The people who worked on the school this past summer include:

- David E Byler with exterior restoration and construction of the porch
- Levi Mast and his sons for painting the exterior
- Bill Farber for restoring the flagpole, helping reset the signs and providing the flowers for the porch
- The Town of St Johnsville for providing fill for end of Edwards Road
- Burkdorf Lumber for providing hard to find trim
- Ron Burch and Walt Lane for guidance and running for paint and materials
- Eric Larson our neighbor, for helping with the grading and providing security for the property
- Unless I have omitted someone, last but not least,

little Jakie Byler for cleaning out the woodshed and helping repair the floor, thus eliminating the woodchuck.

The Courier Standard Enterprise has an excellent article on the restoration in their Oct30-Nov5, 2020 edition. I am looking forward to working on the interior in 2021.



Thank You

We gratefully thank those who have donated toward the maintenance and restoration of the 1747 Nellis Tavern and grounds and the District # 8 Schoolhouse.

Corporate:

- Mohawk Country - \$900
- Tianaderrah Foundation & R. Gipson - \$1000

Business:

- James Dempsey—flower arrangements by Studio Herbage
- George Heigel—Antique Appraisals

Monetary Donations:

- J. Walker - A. McEnroe - J. Lein
- P. Ferguson - G. Davis - J. Reston
- K. Nabors

Special Monetary Donations:

- J. Button
- S. N. Davis
- Dr. D. Clement
- P. Russell
- J. McGlone
- F. Tosto in memory of Skip Barshied
- J. Mihal - FaceBook fundraiser
- S. Lane - FaceBook fundraiser

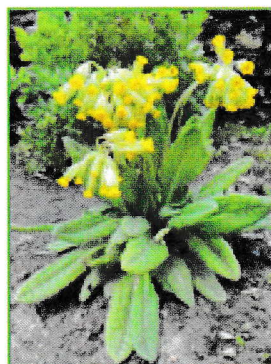
Special Donations:

- Dr. J. Reston, rental of tent for Rhubarb Festival
- Food donors for Antique Show lunch
- John Case, time and materials for schoolhouse
- Anita Shipway, book on early school

2021 Future Events for 1747 Nellis Tavern

We have no events scheduled for this year because of the pandemic. The only event we had last year was the Antique Show and Sale.

If things look better later in the year we may be able to schedule something. In the meantime, watch for the changes as you drive by, both on the Tavern itself and the surrounding gardens and plant life.



Dues Are Due

It is once again time to renew your membership, if you are not a Lifetime Member. Look at your address label on the outside of this Newsletter to see the date of your last membership application.

Example:

Jane Doe 20 (2020, or earlier, time to renew)
or

John Doe L (Lifetime)

Jim Smith PR (Public Relations)

Our Membership year is January 1 through December 31.

Mercantile Members

Thank you for your support!

Thomas Persse Insurance Agency, Inc

48 W. Main St.
PO Box 207
Fonda, NY 12068

Phone: 518-853-5442
Fax: 518-853-5443
Tom@PersseInsurance.com

**Tom Persse
Manager**

**Heritage Meadows Farm
B & B**

510 County Hwy 140
St. Johnsville, NY
13452

518 568 2997

HeritageMeadowsFarm@FrontierNet.net
www.HeritageMeadowsFarm.com

Hosts
Stephen & Judith Mihal

Saltsman's Hotel
Junction Rtes. 67 & 10, Ephraim
Five County State Historical Park, Dining Since 1813

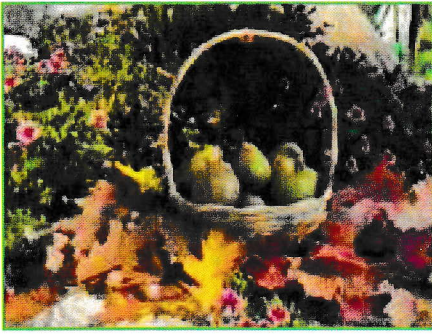
For Reservations Call
(518) 993-4412

Don't Forget Our Unique
Historical Setting for your next
Bridal Shower, Rehearsal Party or
Anniversary Celebration

Serving Dinner Wednesday—Sunday • www.saltsmans.com

Paul A. Russell, Ph.D.
PROFESSOR OF HISTORY-EMERITUS

19 Homer Street
Worcester, MA 01602 USA
Tel: 508-757-7586
Cell: 508-353-1305
pruss19@hotmail.com



Nellis Pears in Fall

Palatine Settlement Society
PO Box 183
Saint Johnsville, NY 13452

FaceBook: 1747 Nellis Tavern
www.PalatineSettlementSociety.com

2021 Newsletter

Our Antique Show & Sale at Arkell Museum

by Joan Draus, Show Promoter

The very successful 15th annual **Palatine Settlement Society Antique Show & Sale of 2020** was again held on the first Saturday of March, at the beautiful **Arkell Museum in Canajoharie**. Known for its quality antiques and collectibles, it featured over 20 dealers showcasing early china, glassware, paintings, jewelry, books, small furniture, tools, primitives, and collectibles. Additionally, antique Appraiser and Auctioneer George Heigel offered appraisals for antique items presented by persons interested in learning more about a well-loved treasure.

Located 1/8 mile from NYS Thruway Exit 29, the Arkell Museum boasts an easily accessible location for the antique and decorative arts enthusiast from near and far. The Museum's Great Hall, where show dealers were located, boasts a fabulous painted floor depicting the historic footprint of the Mohawk Valley—and certainly complemented the atmosphere of our show!

This 2020 show hosted dealers who have returned yearly since our first antique show as well as dealers new to this show, all of whom shared attractive exhibits. This Antique Show has earned a reputation for offering quality wares, year after year. We have aimed to maintain the gold standard established by our first show promoter, Donna Reston, in which dealers exhibited only genuine antiques and collectibles.

During show hours, we again offered homemade sandwiches, delicious soups and desserts available for purchase. Prepared by PSS trustees Mary Nellis Davis, Judi Mihal and other PSS members, this is a place not to miss!

Sadly, we are unable to hold this benefit for the Palatine Settlement Society this year, due to the current health pandemic. We trustees will continue to work towards the progress in restoration of the historic Nellis Tavern, St. Johnsville and look forward to the time for re-opening the Tavern for tours.

2020 Show

